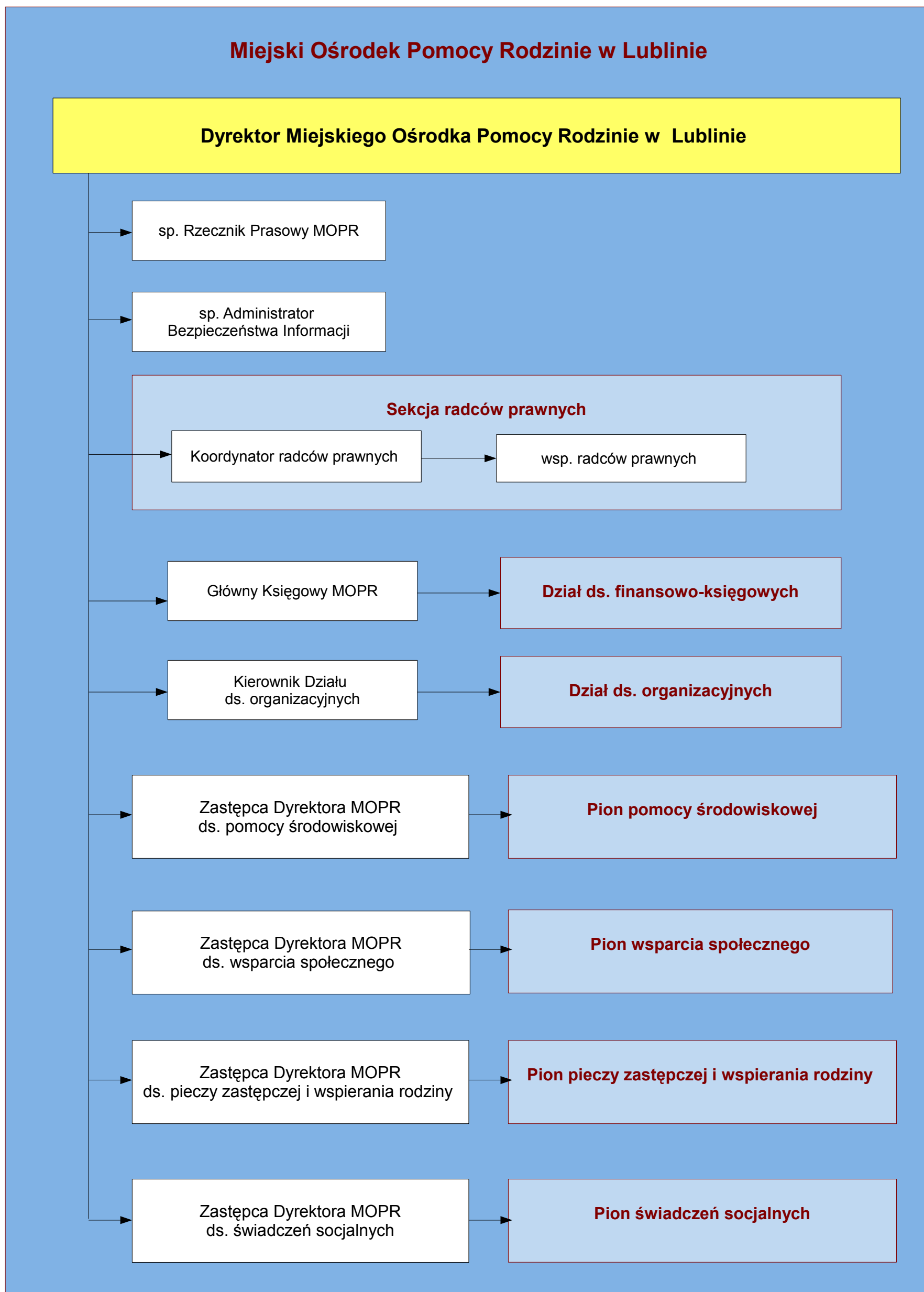
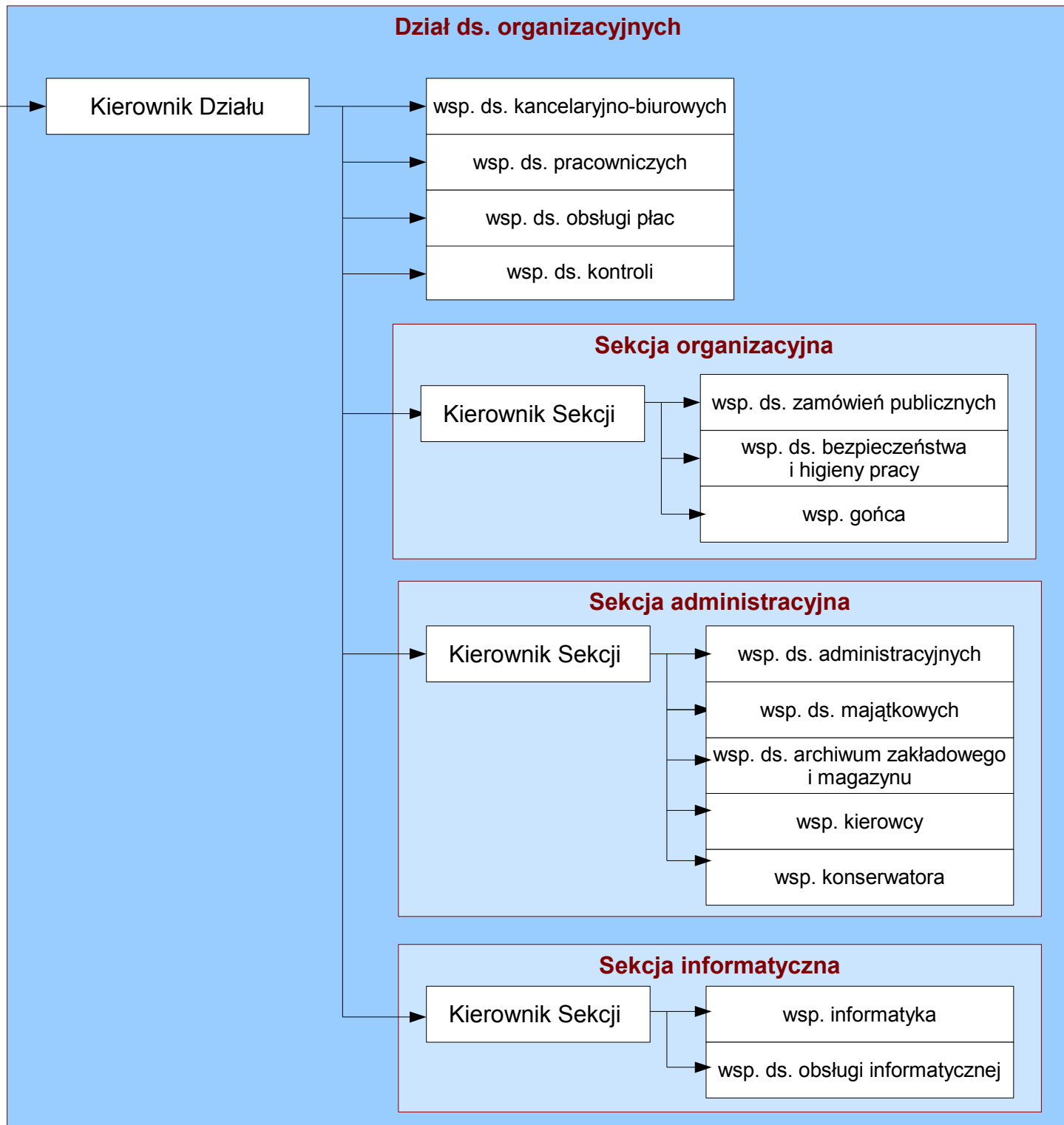
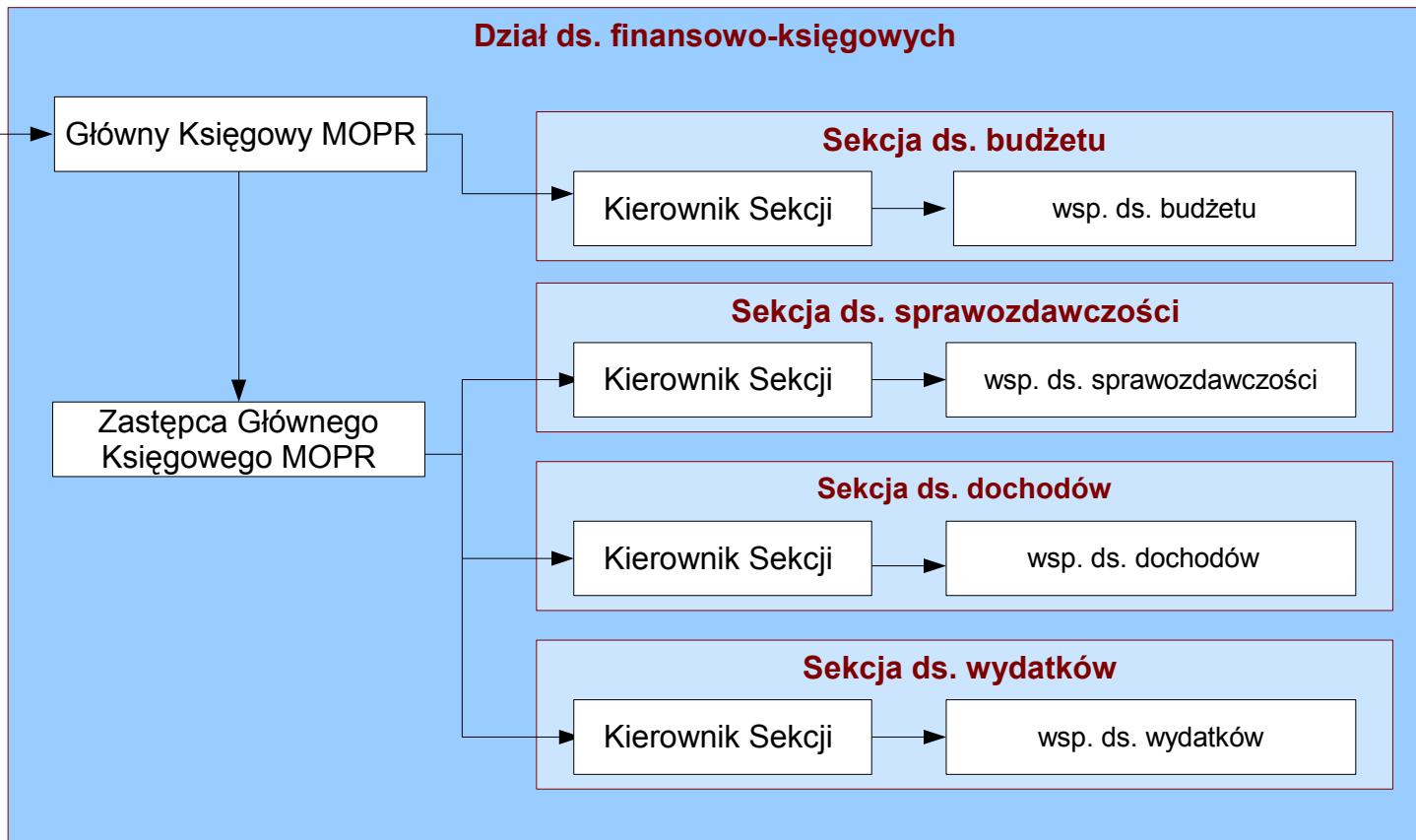
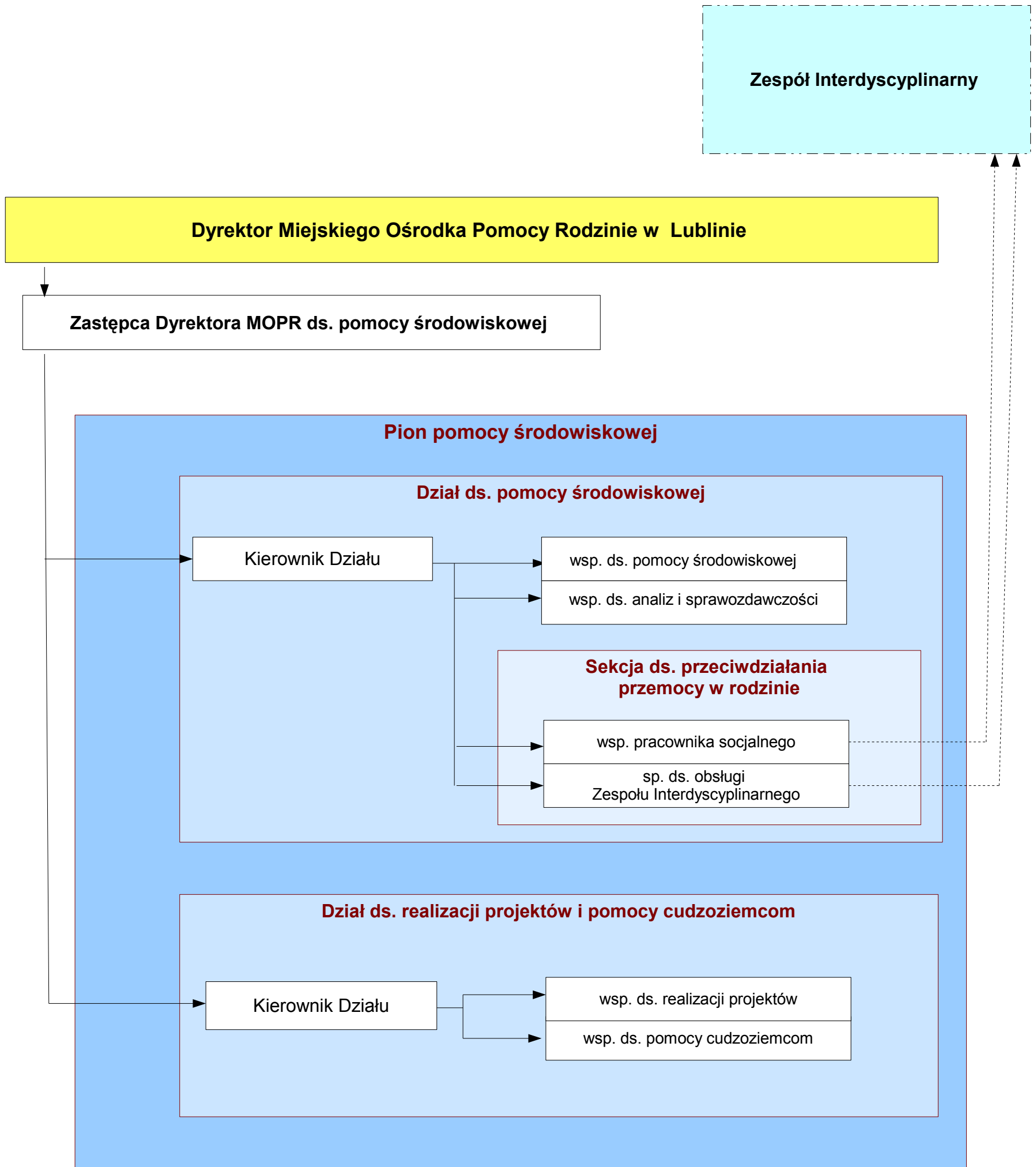


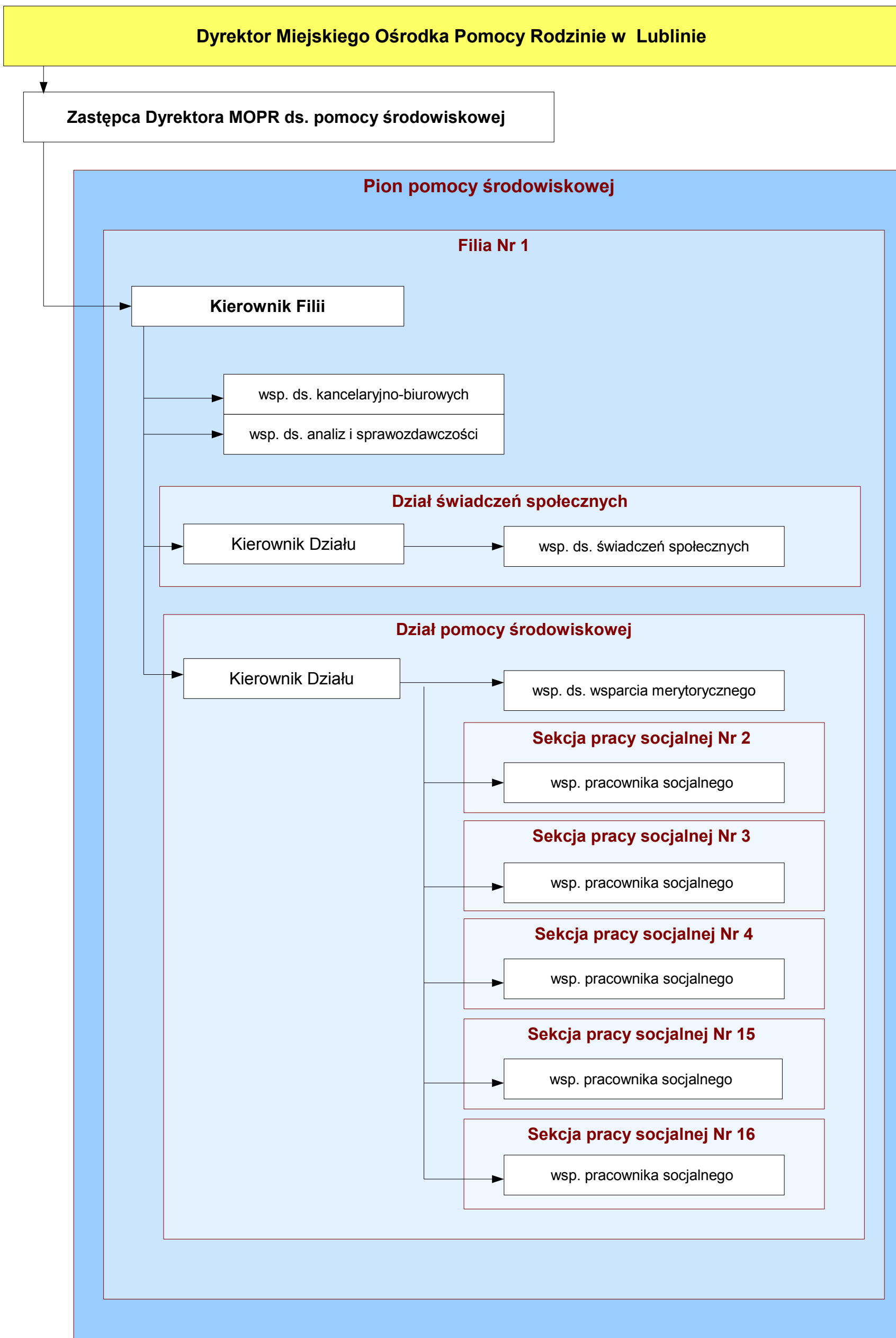
Schemat graficzny struktury organizacyjnej Miejskiego Ośrodka Pomocy Rodzinie w Lublinie

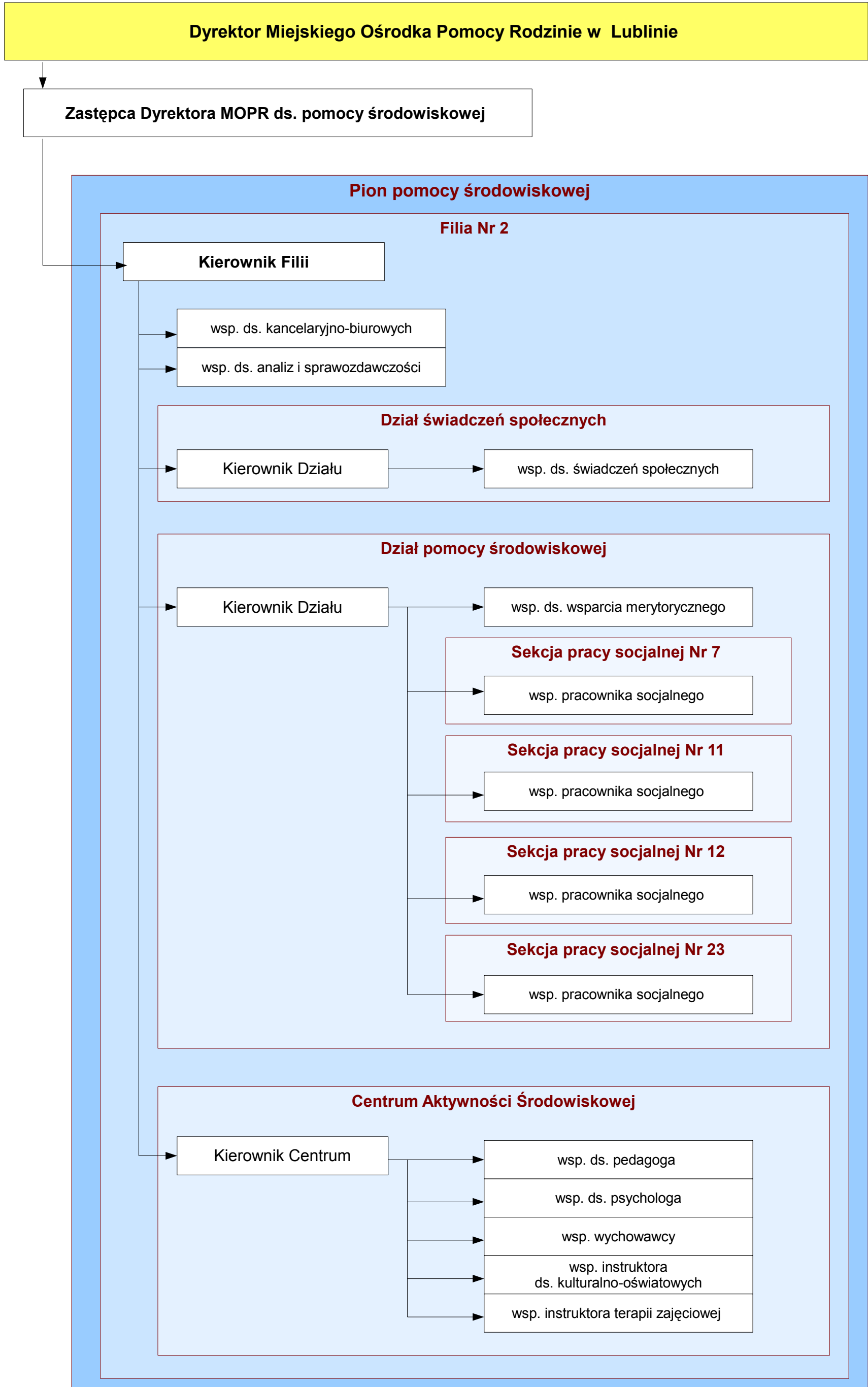


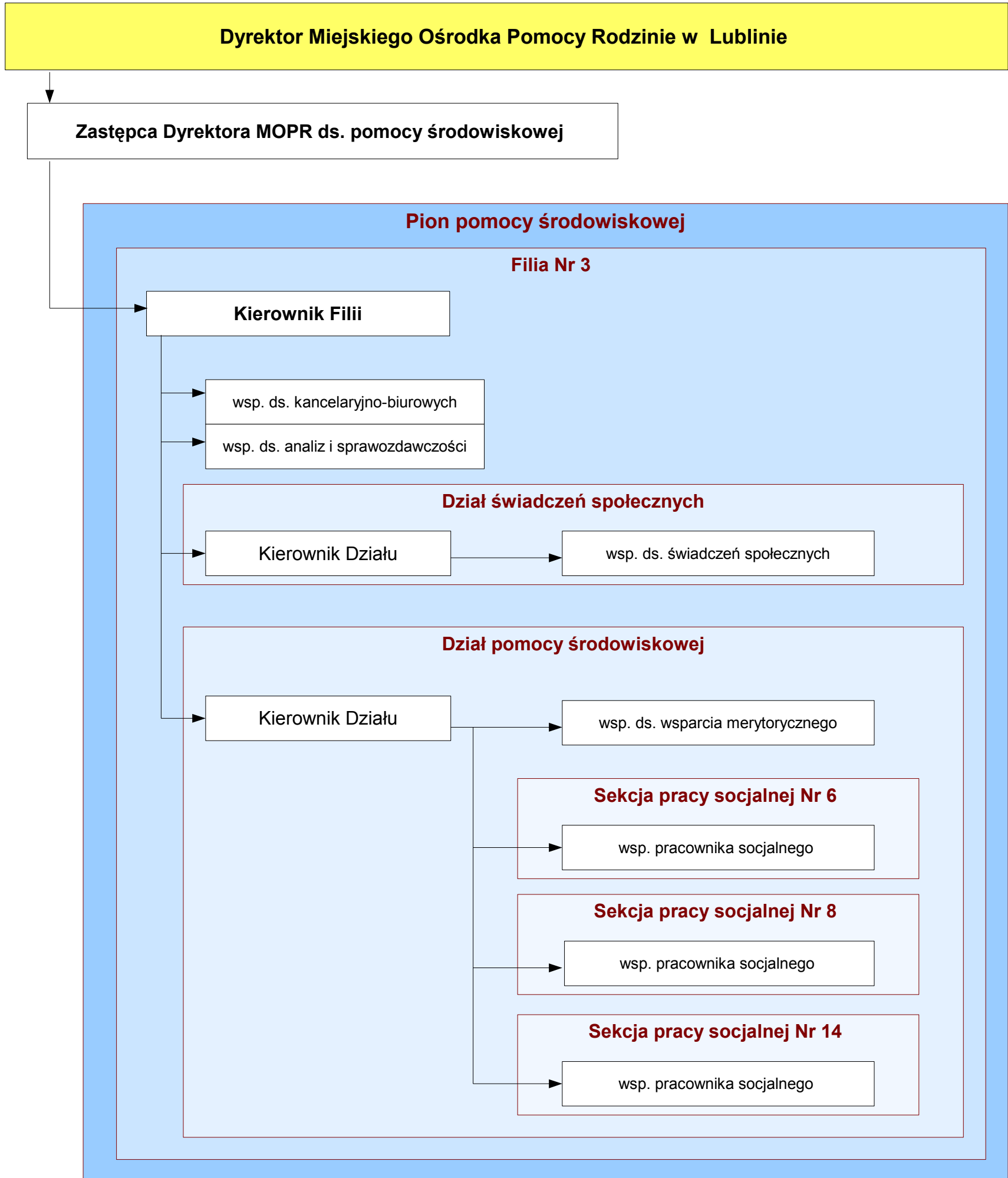
Dyrektor Miejskiego Ośrodka Pomocy Rodzinie w Lublinie

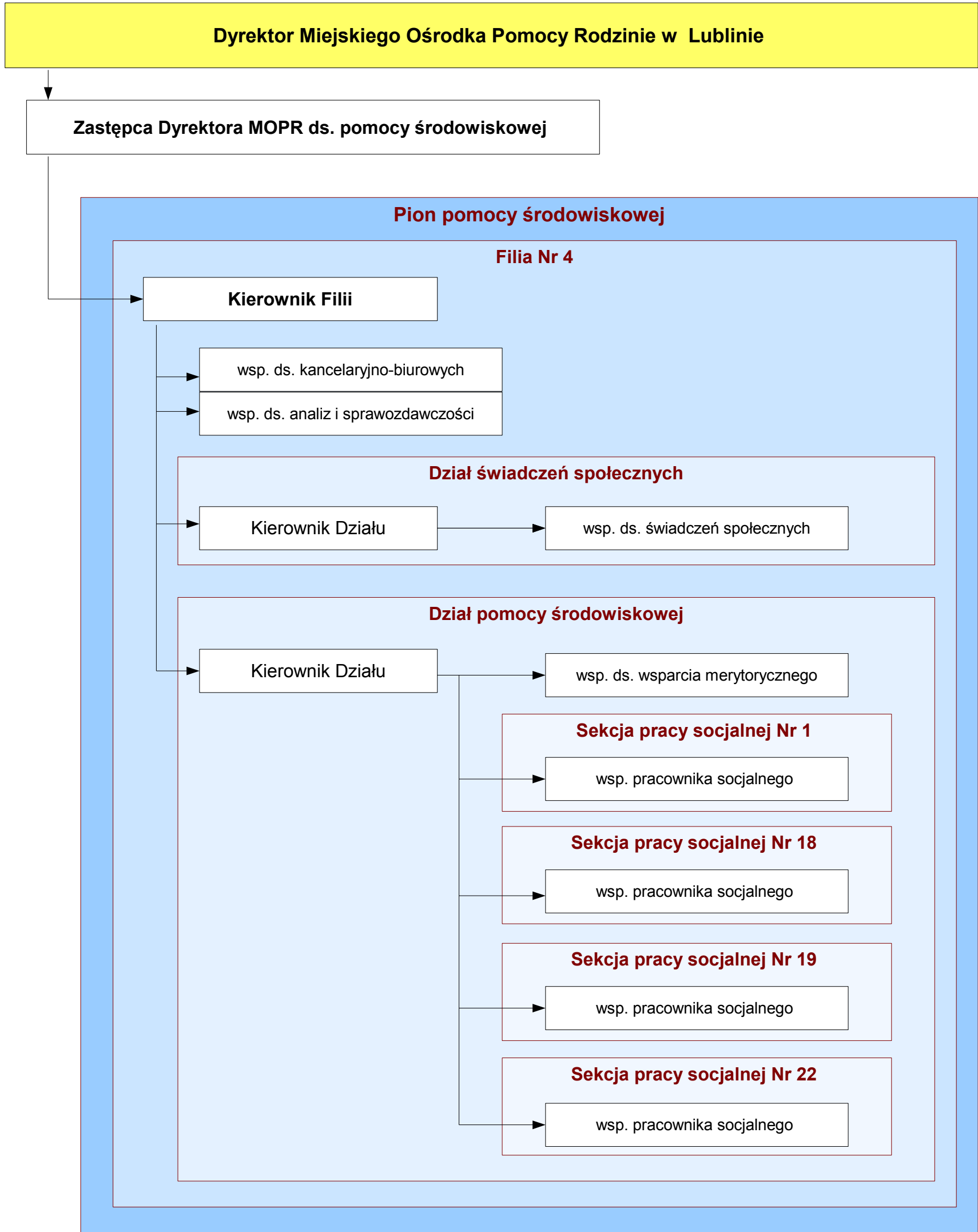


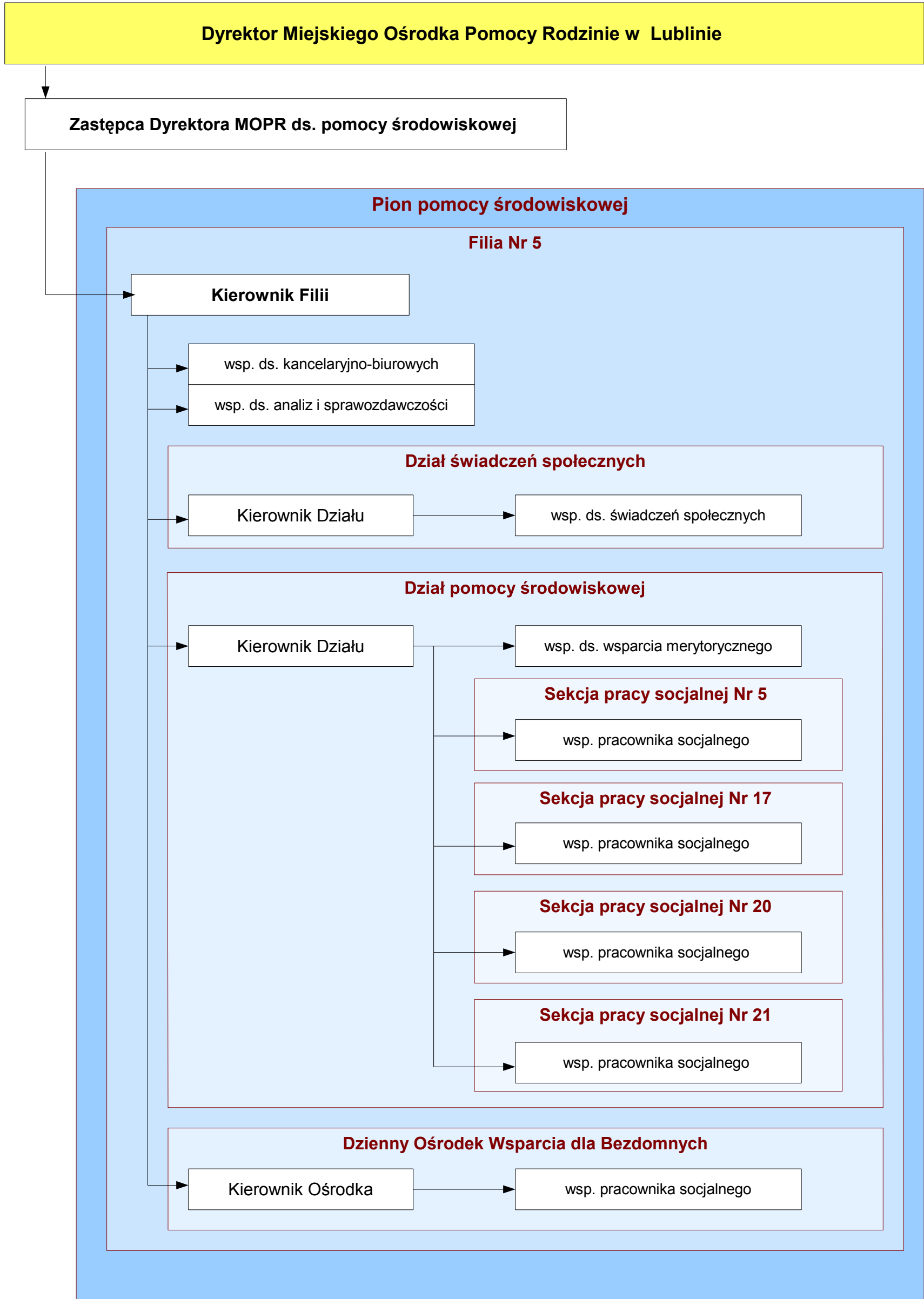


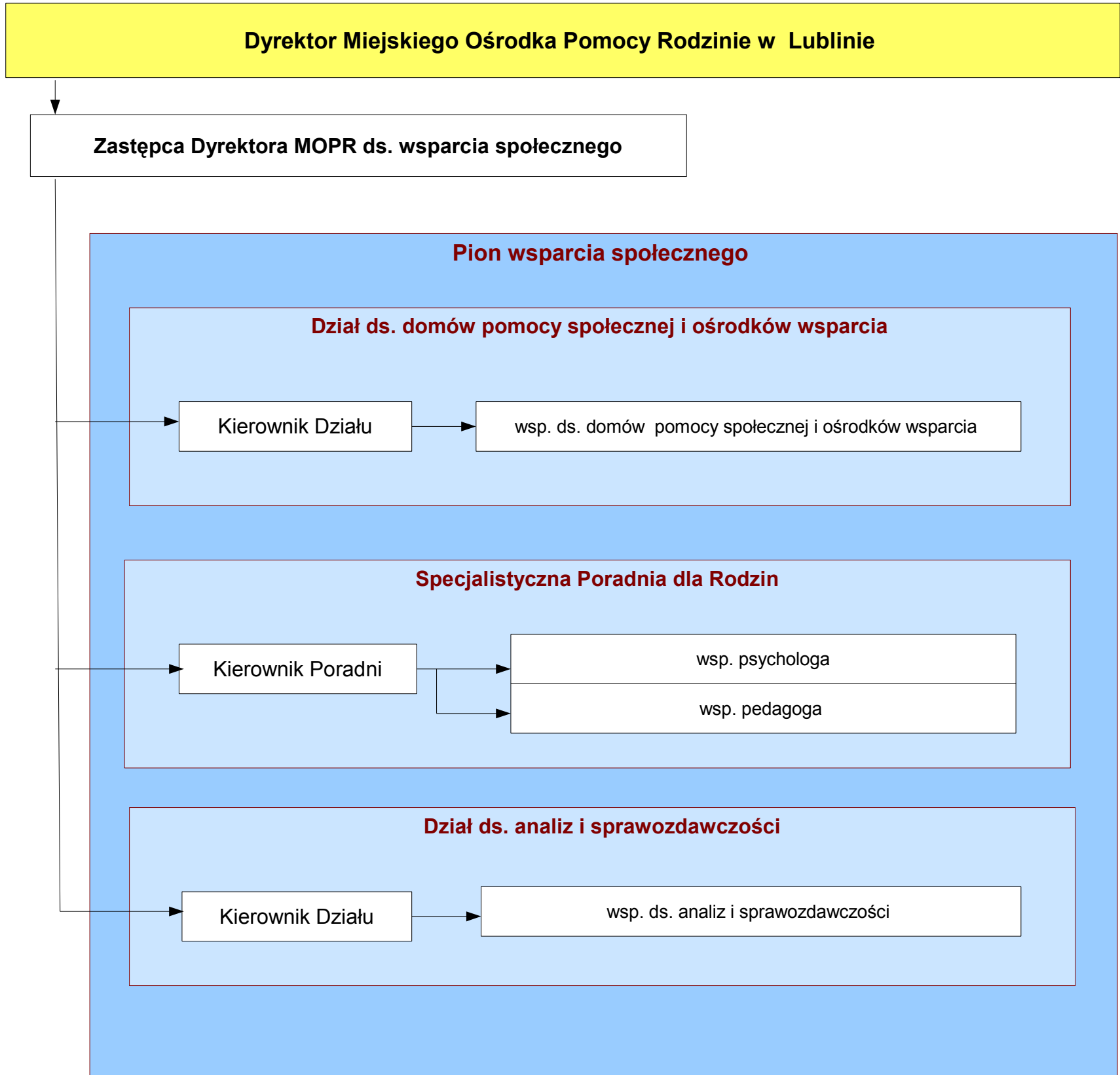


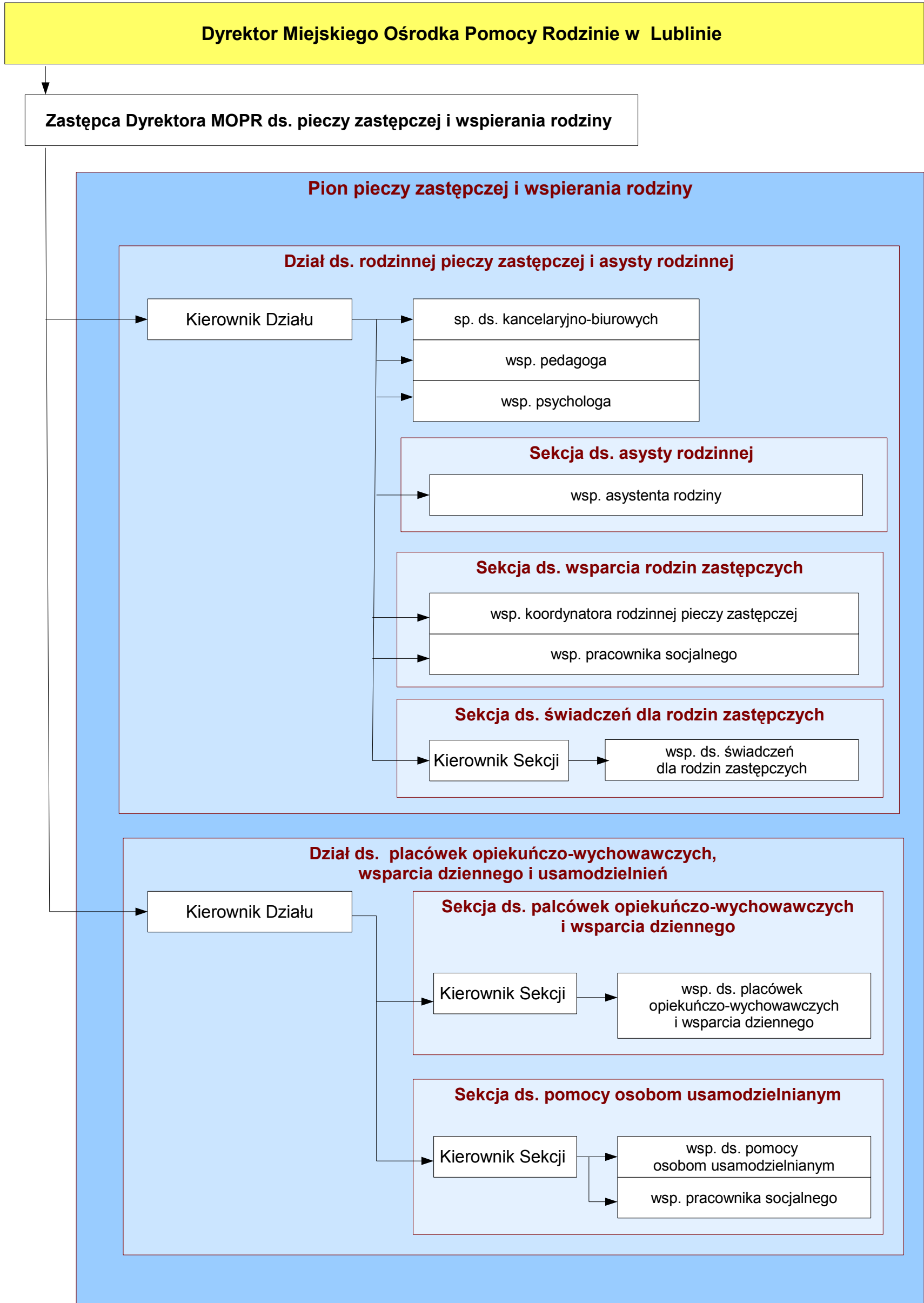


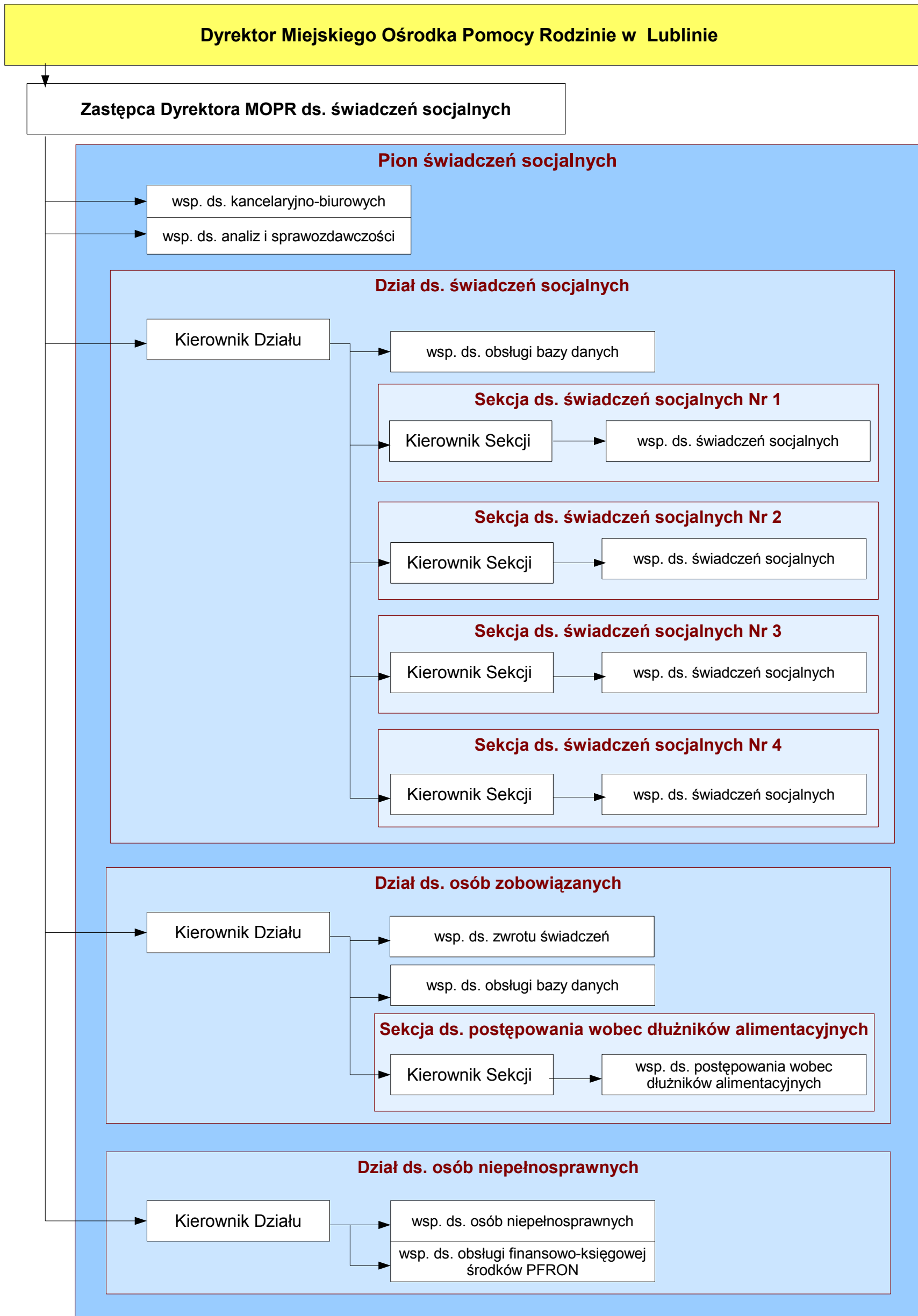










**Wyjaśnienie:**

1. Wektor kierunkowy oznacza podległość służbową.
2. Skróty użyte w opisie stanowisk pracy oznaczają:
 - 1) sp. – jednoosobowe stanowisko pracy;
 - 2) wsp. – wieloosobowe stanowisko pracy.